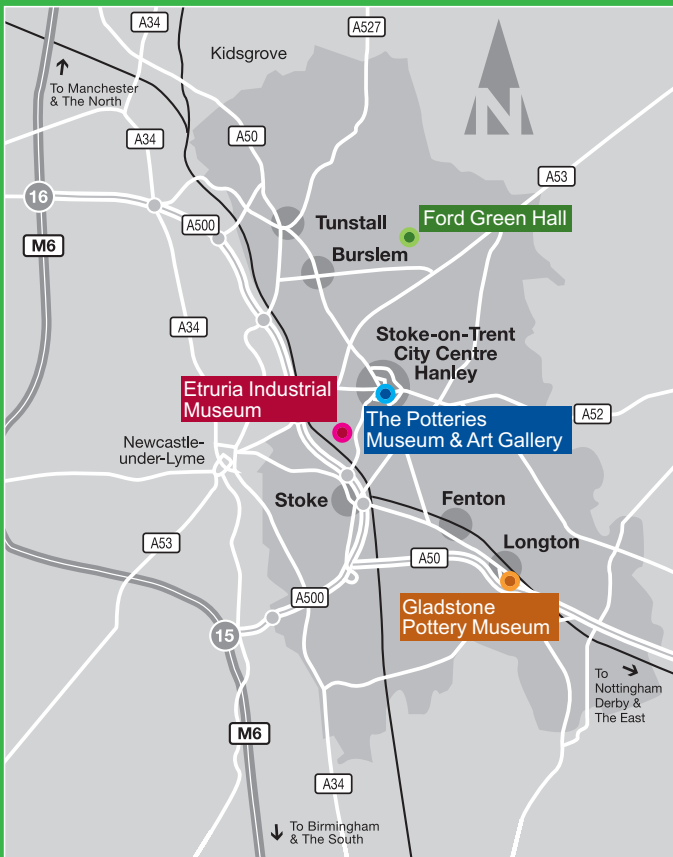


Museum and Gallery Education

To book a learning session call the Education Team at the appropriate museum.

Museum Friends

Become a friend of the Museums in Stoke-on-Trent, for more information contact 01782 232323.



Stoke-on-Trent Museums

what's on

Exhibitions, Events and Activities
April – June 2011



Alternative versions of our What's On leaflet are available on request, please telephone 01782 232323 for more information.



MLA Renaissance
Museums for
changing lives



stoke.gov.uk/museum

Canals Festival
Saturday 4 - Sunday 5 June

All information correct at time of going to press. We reserve the right to change or cancel events and exhibitions without prior notice. © Stoke-on-Trent City Council, 2011.

Stoke-on-Trent
Your Museums



The Staffordshire Hoard

The Potteries Museum & Art Gallery and Birmingham Museum & Art Gallery have jointly acquired the Staffordshire Hoard. Around 80 artefacts from the largest Hoard of Anglo-Saxon gold ever found, and other exhibits from the period, are now show at The Potteries Museum & Art Gallery.



This exceptional group of seventh-century gold and silver warrior gear, many pieces with intricate garnet inlay, was found buried in a field last year. A recent reassessment has shown that there are 3400 gold, silver and silver gilt artefacts, including helmet plaque fragments and loose cut garnets.

Further funding of £1.7million is needed to conserve, research, restore and display the Hoard. Donations towards the Hoard's interpretation are gratefully accepted.

For up-to-date information please visit:
www.stokemuseums.org.uk/pmag/hoard

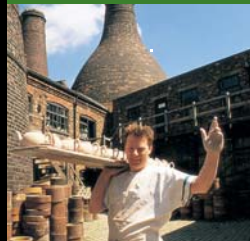
www.staffordshirehoard.org.uk



Etruria Industrial Museum



Ford Green Hall



Gladstone Pottery Museum



The Potteries Museum & Art Gallery

Stoke-on-Trent Museums Welcome to What's On

This guide lists everything we have planned at our four museums from April until the end of June. We have plenty of events and exhibitions including activities during the school holidays at all of our sites and craft courses for all ages.

Our website has lots more information and you can sign up to receive information from us by post or by email, please take a look at www.stoke.gov.uk/museum and we hope to see you soon at our museums, shops and cafes.



Pay only once:

The Museums Passport provides great value for money allowing unlimited daytime admission to all our charging museums for a year and a 10% discount at The Potteries Museum & Art Gallery Foyer Shop.

For current passport charges please phone any of our museums or look at www.stoke.gov.uk/museum

Etruria Industrial Museum



Etruria Industrial Museum,
Lower Bedford Street, Etruria,
Stoke-on-Trent ST4 7AF
Sat Nav reference: ST1 4RB
Sat Nav reference for disabled
car park: ST4 7AF
Telephone: 01782 233144
E-mail: etruria@stoke.gov.uk



The last working steam powered potters' mill in Britain and a scheduled ancient monument. The museum re-opened to the public on Friday 1 April with a varied programme of events. These include antique valuations, canalside craft classes, Mother's Day and Easter events all the way through to the Canals Festival in June, which sees the site bustling with activity, boats and entertainment.

The museum accepts bookings from groups and schools and the canal warehouse is available to hire for room bookings. Please contact the museum for more information or to make a booking.



Access: If you are a wheelchair user or have a pushchair please contact us for access information.

Have you tried our Toolbox Challenge? Our interactive family activity is free with admission, pick up your toolbox and instructions at Reception when you visit.

Admission Charges - Adult £3, Concessions £2, Family Ticket £6.50, Under 5's and Wheelchair users free. Free car park off Etruria Vale Road.

stoke.gov.uk/museum

Ford Green Hall



Ford Green Hall,
Ford Green Road, Smallthorne,
Stoke-on-Trent ST6 1NG
Telephone: 01782 233195
E-mail:
ford.green.hall@stoke.gov.uk



A 17th century timber-framed farmhouse, the Hall was home to the Ford family for nearly 200 years and has a collection of ceramics, textiles and furniture. It offers a fascinating insight into 17th century life and has seasonal events. The Hall is available for civil weddings and baby naming ceremonies and we also provide children's birthday parties. Room hire available for meetings, please call us for details.

Open: Sunday - Thursday 1 - 5pm.
Last admission 4.30pm

Shop and Tea Room open to non-museum visitors

Admission Charges - £3 adults, £2 concessions, Family Ticket £6.50, Under 5s and wheelchair users free, free car park.

Downstairs access only for wheelchair users virtual tours available of the first floor on request.

stoke.gov.uk/museum

Gladstone Pottery Museum



Gladstone Pottery Museum,
Uttoxeter Road, Longton,
Stoke-on-Trent ST3 1PQ
Telephone: 01782 237777
E-mail: gladstone@stoke.gov.uk



Gladstone is the only complete Victorian pottery factory from the days when coal burning ovens made the world's finest bone china. Traditional skills, original workshops, the cobbled yard and huge bottle ovens transport visitors back in time. Visit the gift shop and tea room and have a go at throwing a pot, making a china flower or decorating pottery. Please allow 2 - 3 hours for your visit.



Access: If you are a wheelchair user or have a pushchair please contact us for access information.

Open: Museum open every day from 10am - 5pm.
Shop open to non-museum visitors.

Admission Charges - Adults: £6.95,
Children £4.75 - 4 - 16 years (All children under 16 must be accompanied by an adult.) Concessions £5.50, Family Ticket: £20 - two adults plus two children. There is a small extra charge for activities. Free parking and coach parking.

stoke.gov.uk/museum

The Potteries Museum & Art Gallery



The Potteries
Museum & Art Gallery,
Bethesda Street, City Centre,
Stoke-on-Trent, ST1 3DW
Telephone: 01782 232323
Minicom: 01782 232515
E-mail: museums@stoke.gov.uk



Discover the history of The Potteries including the world's greatest collection of Staffordshire ceramics, a WWII Spitfire, decorative arts and natural history. See items from the Staffordshire Hoard and visit the museum café and shop in the heart of the city centre.



Please donate £3 to help support your museum.
Thank you. Every donation makes a real difference...

Satellite Navigation reference: ST1 3DW

Opening Hours:
Monday to Saturday 10am - 5pm
Sunday 2 - 5pm.

Donations Welcome

stoke.gov.uk/museum

Exhibitions

Erasure

Until 2 May

STOKE YOUR FIRES.

ERASURE

A new media exhibition featuring works from the Arts Council Collection and local artists. Each of the works responds to the idea of creating a new image from one that already exists.

PMAG

Minerals Make Mountains

Until 3 July

Mixing art and nature from the Museum's collections, this exhibition illustrates various stages of the cycle that turns rocks into the minerals that make mountains. The exhibition features two recently restored paintings by local Victorian artist John Nash Peake, that have not been on show for at least 30 years.

PMAG



Matterhorn, 1899, John Nash Peake

KEY: EIM Etruria Industrial Museum FGH Ford Green Hall GPM Gladstone Pottery Museum PMAG The Potteries Museum & Art Gallery

The Story of Shelley Potteries - Wileman and Shelley Exhibition



18 April - 1 May

The largest exhibition of Wileman and Shelley china since the pottery closed in 1966, charting 100 years of history of this local pottery. Exhibits include vases, tea, coffee and dinner ware, nursery, souvenir, royal commemorative and crested ware by famous designers including

Frederick Rhead, Walter and Eric Slater, Hilda Cowham and Mabel Lucie Attwell. For further information see www.shelley.co.uk. Free with museum admission.

GPM



Designed by Eric Slater at Shelley Pottery - Art Deco "Vogue" shape cup and saucer in the "Sunray" design of 1930

Ceramic Cities – Dialogues in Design

28 May - 4 September

Featuring highlights from the Museum's collections, this exhibition explores fascinating cultural connections between East Asian and British ceramics. Focusing on the ceramic cities of Jingdezhen and Stoke-on-Trent, the show covers over a thousand years of ceramic history. Rarely seen pieces from both east and west include the work of Bernard Leach, Rob Kesseler and Hamada Shoji. PMAG



Group of Chinese porcelain vases with overglaze enamel decoration, 1920s

Displays

Contemporary Craft

Until 3 July

See new work by Midland Artists in Glass, Ceramics and Sculpture (MAGiCS).

PMAG



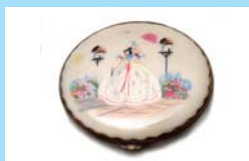
Conkers, 2010, Pete Higgs

Designer Maker

Until 3 July

Work by students from Staffordshire University's 3-D art course.

PMAG



Compact, 1950-1960

Making Faces

Until 19 September

Produced with burlesque and pin up artist Gemma Parker this display explores dressing up, hidden stories and identity using costume and accessories from our decorative arts collection.

PMAG

Craft and Design Month

4 May – 6 June

Discover the wealth of creative talent in Stoke-on-Trent as the museum hosts a display of the work of local craftspeople as part of this national event. Free with museum admission.

EIM



James Bateman Bicentenary

11 June - 24 July

This small display highlights the interests and influences of James Bateman of Biddulph Grange Gardens and celebrates his 200th birthday. In partnership with the National Trust, there will be a series of related talks at the museum on 11, 12 and 13 July - details will be available with the display and on our website.

PMAG



Illustration from The Orchidaceae of Mexico and Guatemala first published by James Bateman in 1837

Ongoing events

The Children's University

Children aged between 7-14 years can get a stamp for their Children's University Passport when they take part in the weekday holiday craft activities at all four Museum sites and Arty Party at The Potteries Museum & Art Gallery. For more information about the Children's University in Stoke please see their website at www.staffs.ac.uk/stokecu



Have a Go

Everyday

Try making a pot, bone china flower or decorating pottery. 10am – 4.30pm, from £1 plus admission.

GPM



Ripping Yarns

Friendly and informal "knit and natter" group who crochet, tat, rag rug, embroider and are keen to try new activities. Tea, coffee and quite often cake, new members of all abilities welcome.

Ripping Yarns

Meetings at Etruria Industrial Museum are Thursdays, 1.30 – 3pm.

EIM

Ripping Yarns

Meetings at The Potteries Museum & Art Gallery every first and third Saturday of the month, 10.30am – 12.30pm.

PMAG

Ford Green Threaders

Meetings every Monday 2 - 4pm

Textile group who use traditional materials and patterns to create needlework including bed spreads and cushions which are displayed at the Hall. New members welcome.

FGH

Ongoing events



limited numbers, please book in advance
hands-on activities for families. All children must be accompanied by an adult. Groups of 10 or more please book in advance.

Arty Party

Saturdays 16 April, 30 April, 14 May, 28 May,
11 June, 25 June

Fortnightly Saturday morning art club for 8 – 14
year old. 10.30am – 12.30pm,
£2.60 or £10 for four sessions.

B - PMAG



Toddler Tuesday

Tuesdays, 24 May, 21 June
Learn, play and explore in our
under 5's sessions. Discover
our collections, make a 'crafty'
creation and listen to storytime
provided by Stoke-on-Trent
Libraries. 10.15 – 11.15am,
free.

B - PMAG



Toddler Wednesday

Wednesdays, 18 May, 15 June
Learn, play and explore in our
session for under 5's. Discover
our collections and make a
'crafty' creation and enjoy a
story. 1.15 – 2.15pm, free
session, normal admission
applies to the museum.

B - FGH



Toddler Thursday

Thursdays, 12 May, 9 June
Learn, play and explore in our
under 5's sessions. Discover
our collections, make a 'crafty'
creation and listen to storytime
provided by Stoke-on-Trent
Libraries. 10.15 – 11.15am,
free session, normal admission
applies to the museum.

B - GPM



KEY: **EIM** Etruria Industrial Museum **FGH** Ford Green Hall **GPM** Gladstone Pottery Museum **PMAG** The Potteries Museum & Art Gallery

Toddler Friday

Fridays, 27 May, 24 June

Learn, play and explore in our
session for under 5's. Discover
our collections and make a
'crafty' creation and enjoy a
story. 1 – 2pm, free session,
normal admission applies to
the museum.

B - EIM



**Please note parents/carers must stay with
their children during the Toddler Sessions.**

Easter Film Showings at The Potteries Museum & Art Gallery

Saturday 9 April,

Monday 11 April – Saturday 16 April

10.30am 'Shrek Forever After' cert U (Please
note no showing of this film on Tuesday 12 April)

1.30pm 'Secretariat' cert U

PMAG

Monday 18 April – Friday 22 April,

Monday 25 April

10.30am 'Tinkerbell and the Great Fairy Rescue'
cert U

1.30pm 'The Sorcerer's Apprentice' cert PG

PMAG

Admission £3.00

What is it?

Wednesdays, 4 May, 1 June

Free expert advice on the identification and care
of your objects including ceramics, art and local
and natural history. Please note we do not
provide valuations. 1 – 2.45pm, free.

B - PMAG

Activities and Events



KEY: EIM Etruria Industrial Museum FGH Ford Green Hall GPM Gladstone Pottery Museum PMAG The Potteries Museum & Art Gallery

B

limited numbers, please book in advance
hands-on activities for families. All children must be accompanied by an adult. Groups of 10 or more please book in advance.

Run up a Rag Rug

Saturday 16 April

Make a rag rug using your own recycled T-shirts or those provided. Beginners welcome, 11am – 3pm, £4.50. Call 01782 233144 to book.

B - EIM

Bunny Ears

Sunday 17 - Thursday 21, Sunday 24 and Monday 25 April

Have a hopping good time making a pair of Easter Bunny Ears. 1 – 4pm, £1 plus admission. FGH

St George's Dragon

Tuesday 19 April

Celebrate England's patron saint by making a dragon. Drop-in, 12 – 3pm, 50p plus admission. GPM

Rock Stars

Tuesday 19 April - Thursday 21 April

Make a pebble pal for your garden. Drop-in 10.30am - 12.30pm, 1.15 - 4pm, £1. PMAG

Curators at Work – Natural History Gallery

Wednesday 20 April

You are welcome to come along and ask for advice on object conservation issues while the curators are working on the gallery displays. Please note that part of this gallery may be closed during the day. 10am – 3pm PMAG



Antique Valuation Day at Gladstone

Friday 6 May

Bring your objects to experts from Bamfords Auctioneers for a free valuation 2-4pm GPM

Easter Craft Activities

Cracking Cards

Monday 11 April - Thursday 14 April

Make an Easter Chick Card with flapping wings. 1 – 4pm, £1 plus admission. FGH

Easter Trail at the Hall

Mondays – Thursdays, 11 April - 25 April

Complete the trail and claim a small prize. 1 – 4pm, 50p plus admission. FGH

Rabbit Masks

Tuesday 12 April

Make a rabbit mask to take home. Drop-in, 12 – 3pm, 50p plus admission. GPM

Bird Brains

Tuesday 12 April - Thursday 14 April

Make a bird hat to wear. Drop-in 10.30am - 12.30pm, 1.15 - 4pm, £1. PMAG



Eggstra-special

Wednesday 13 April – Friday 15 April

Make an egg cup from air drying clay and take it home to decorate, 12 – 4pm, £1 plus admission. EIM

Activities and Events



limited numbers, please book in advance
hands-on activities for families. All children must be accompanied by an adult. Groups of 10 or more please book in advance.

Ecton Copper Mine

Saturday 7 May

This preserved copper mine features in our Minerals Make Mountains exhibition. Volunteers from the Ecton Hill Field Studies

Association will be talking to visitors about their educational work which includes underground tours, earth science and industrial archaeology sessions for groups of all ages. 10am - 3pm, free, no booking required.

PMAG



Ecton hill and spoil heaps

PMAG The Potteries Museum & Art Gallery

Pots of Fun

Tuesday 31 May - Thursday 2 June

Make a clay pot inspired by our Ceramic Cities exhibition. Drop-in 10.30am - 12.30pm and 1.15 - 4pm, £1.

PMAG



Antique Valuation Day at Gladstone

Friday 3 June

Bring your objects to experts from Bamfords Auctioneers for a free valuation 2-4pm

GPM

Write Stuff

Sunday 15 May

Transport yourself back in time and learn about Tudor education. Write with a quill pen and authentic ink and find out about punishment and discipline in the classroom. 1 - 4pm, normal admission applies.

FGH

GPM Gladstone Pottery Museum

Canals Festival

Saturday 4 - Sunday 5 June

A great weekend of family activities including the mill 'in steam', craft fair, colourful historic boats, traditional crafts, refreshments and a programme of children's activities, 10am - 5pm.

EIM



Paint a Silk Cushion

Saturday 21 May

Learn a new skill at our silk painting course. Beginners welcome, 11am - 3pm, £6.50. Call 01782 233144 to book.

B - EIM

GPM Ford Green Hall

'The Seamstress's Wardrobe Unlocked'

Sunday 5 June

Come and experience a typical day in the life of the 17th century seamstress. Watch her as she performs the bygone art of darning and mending clothes. 1 - 4 pm, free with admission.

FGH



Half term Craft Activities

Make a model of Henry's Hog Roast

Monday 30 May - Thursday 2 June

The Tudors didn't have barbecues but if they did... Drop-in, 1 - 4pm, 50p plus admission.

FGH



EIM Etruria Industrial Museum

Bottle Oven Collages

Tuesday 31 May

Make a multi-coloured bottle oven landscape. Drop-in, 12 - 3pm, 50p plus admission.

GPM



Father's Day Shop Promotion

Friday 10 - Monday 13 June

15% off purchases over £5 in the Gladstone Shop. Admission tickets, passports and stamps excluded, shop open to non museum visitors.

GPM

Activities and Events

Curators at Work – Ceramics Studio Pottery

Wednesday 15 June

You are welcome to come along and ask for advice on object conservation issues while the curators are working on the gallery displays. Please note that part of this gallery may be closed during the day. 10am – 3pm

PMAG

Longton Historic Walk

Sunday 19 June

Guided walk of Longton, sensible footwear recommended, if it rains there will be a talk instead. 2pm, £2 to include printed notes.

To book call 01782 237777

B - GPM

Felt Making

Saturday 25 June

Learn a new skill in our felt making session. Beginners welcome, 11am – 3pm, £5.

Call 01782 233144 to book.

B - EIM

Summer Craft Fair

Sunday 26 June

Browse unique gifts made by local craftsmen and sold in the beautiful interior of Ford Green Hall.

Enjoy refreshments in the idyllic setting of the 17th century garden. 1 - 4pm.

Free with admission.

FGH

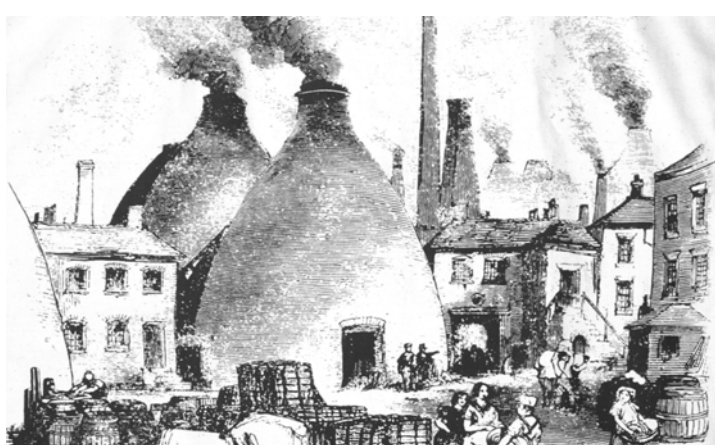
Longton Beer Festival

30 June - 2 July

The yard at Gladstone Pottery Museum will be open for the festival with beer, music and hot food. Tickets £15, discount for passport holders.

Please call Gladstone on 01782 237777 for further details. 7 - 11pm

GPM



Staffordshire Gifts

Staffordshire Gifts is designed to help museums & heritage sites all over the county showcase their unique gifts and collectibles online for the very first time.

The world-class collection of items within the online shop help bring together the diversity of the region and celebrate the history and beauty of Staffordshire old and new. From books about the history of the Staffordshire Hoard to contemporary ceramics from local artists, it's all waiting to be found at www.staffordshiregifts.org.uk

Would you like to volunteer at any of the museum sites?

For more information on how your time can help us please contact the Volunteer Co-ordinator on 01782 233146, see www.stoke.gov.uk/museum or email museum.volunteers@stoke.gov.uk